

# PERSISTENT PERENNIAL RYEGRASS

Cropmark

**Raider**

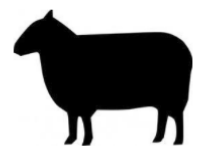
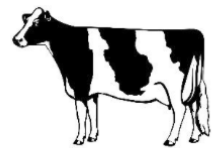
Perennial Ryegrass



## DESCRIPTION

A new very persistent and high yielding diploid perennial ryegrass which has been selected for superior persistence. Contains the NEA2 endophyte for good animal health and insect pest control, including black beetle, Argentine stem weevil and pasture mealybug. Late heading (+ 18 days), with low aftermath heading. Rugged and dependable. Highly ranked for persistence in industry trials.

## SUITED FOR



## BENEFITS

- ▶ High yielding across all seasons; but with strong cool season growth
- ▶ Very strong persistence relative to competitor varieties in industry trials
- ▶ Late heading (+18 days) with low aftermath heading
- ▶ Contains the NEA2 endophyte for good animal health and insect control
- ▶ Particularly suited to upper North Island farming conditions where insect pests such as black beetle, Argentine stem weevil and mealybug are present
- ▶ Excellent disease resistance

## WHERE IT FITS:

Raider is well suited for those farmers wanting both high performance and strong persistence under trying farming conditions and pressure from insect pests such as black beetle, Argentine stem weevil and pasture mealybug. Suitable for use with cattle and sheep.

## SOWING RATE:

Raider perennial ryegrass should be sown into a firm, moist seedbed at a rate of 18-20kgs per hectare, along with 4-6kgs of white clover. (eg 3kgs Mantra large leafed white clover and 2kgs Demand medium leafed white clover).